

# CORAL LAKES VI, A P.U.D.

0614-006

151

A REPLAT OF A PORTION OF TRACT D OF THE PLAT OF CORAL LAKES,  
AS RECORDED IN PLAT BOOK 67, PAGES 197 THROUGH 198 INCLUSIVE OF THE PUBLIC RECORDS OF PALM BEACH COUNTY FLORIDA  
ALL IN SECTION 2, TOWNSHIP 46 SOUTH, RANGE 42 EAST, PALM BEACH COUNTY, FLORIDA

THIS INSTRUMENT PREPARED BY JAMES E. PARK, P.L.S.  
WILLIAMS, HATFIELD & STONER, INC. - ENGINEERS PLANNERS SURVEYORS  
1325 SOUTH CONGRESS AVENUE, SUITE 118, BOYNTON BEACH, FLORIDA 33426

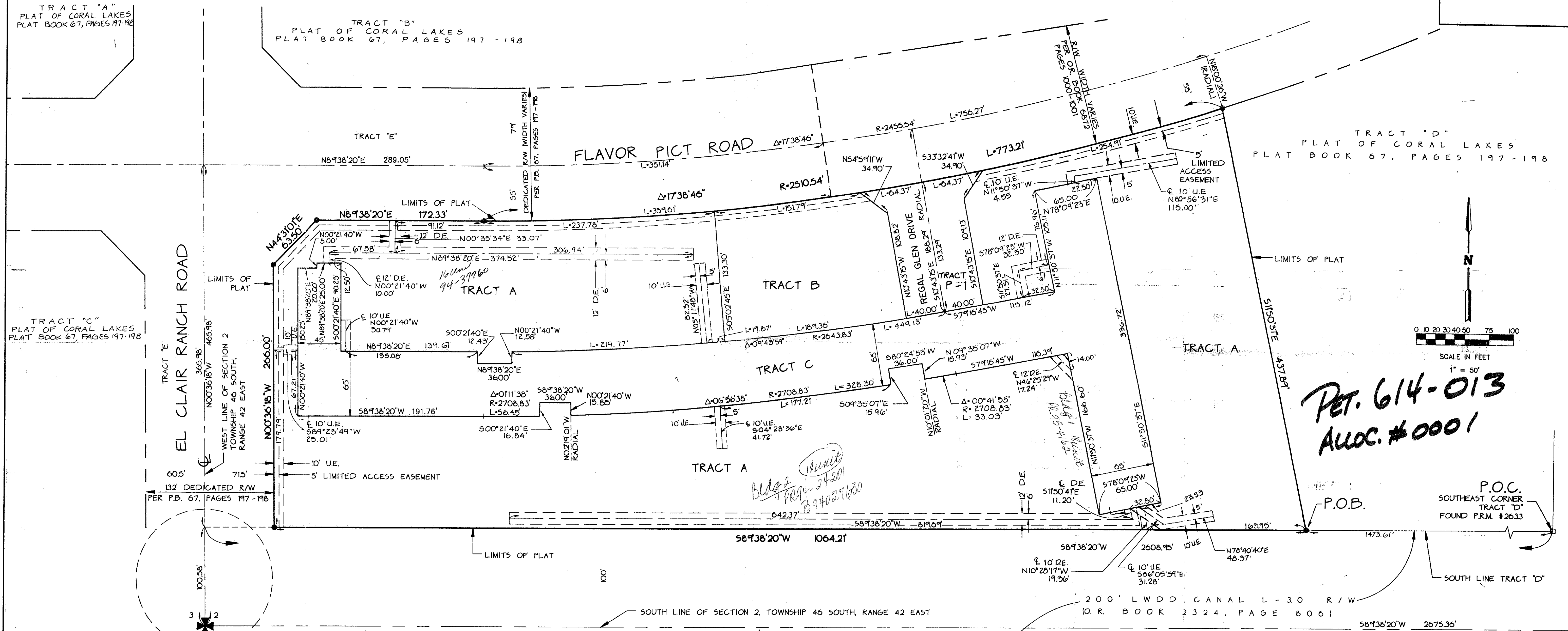
SHEET 2 OF 2

LOCATION MAP

TRACT "A"  
PLAT OF CORAL LAKES  
PLAT BOOK 67, PAGES 197-198

TRACT "B"  
PLAT OF CORAL LAKES  
PLAT BOOK 67, PAGES 197-198

TRACT "D"  
PLAT OF CORAL LAKES  
PLAT BOOK 67, PAGES 197-198

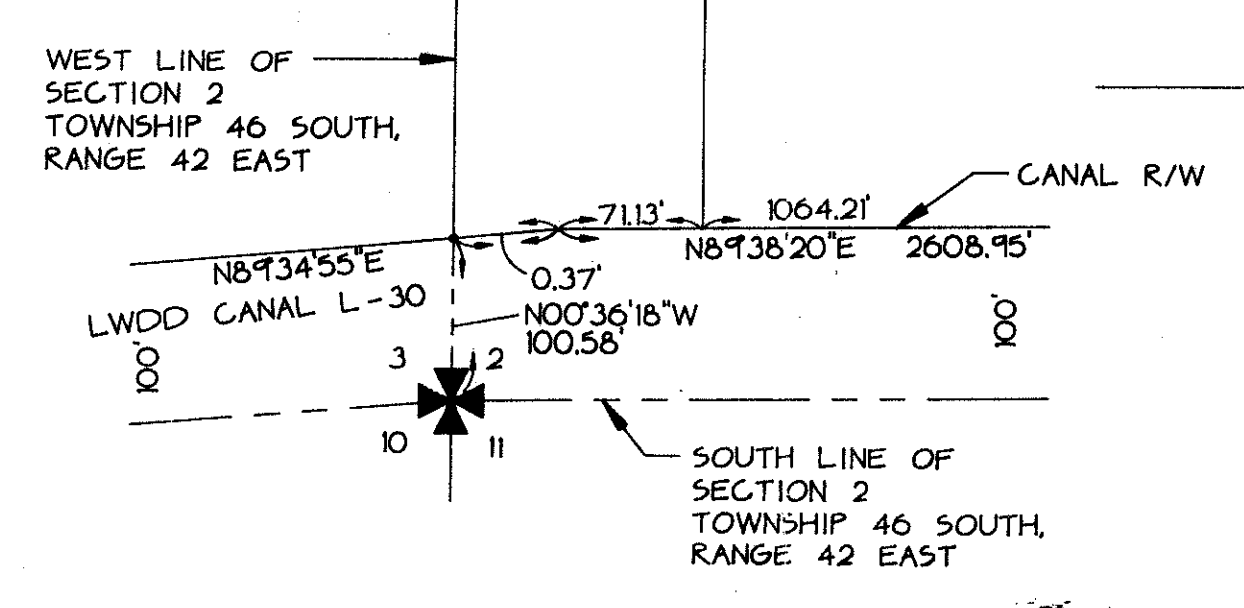


PET. 614-013  
ALOC. #0001

P.O.C.  
SOUTHEAST CORNER  
TRACT "D"  
FOUND P.R.M. #2633

SECTION 2, TOWNSHIP 46 SOUTH, RANGE 42 EAST  
CORAL LAKES VI  
PLAT BOOK 72, PAGE 152  
PLAT BOOK 72, PAGE 152  
PLAT BOOK 72, PAGE 152  
PLAT BOOK 72, PAGE 152

SEE DETAIL A



DETAIL A

VILLA DELRAY  
PLAT BOOK 36, PAGES 19-22

0614-006

CORAL LAKES VI 72/157